

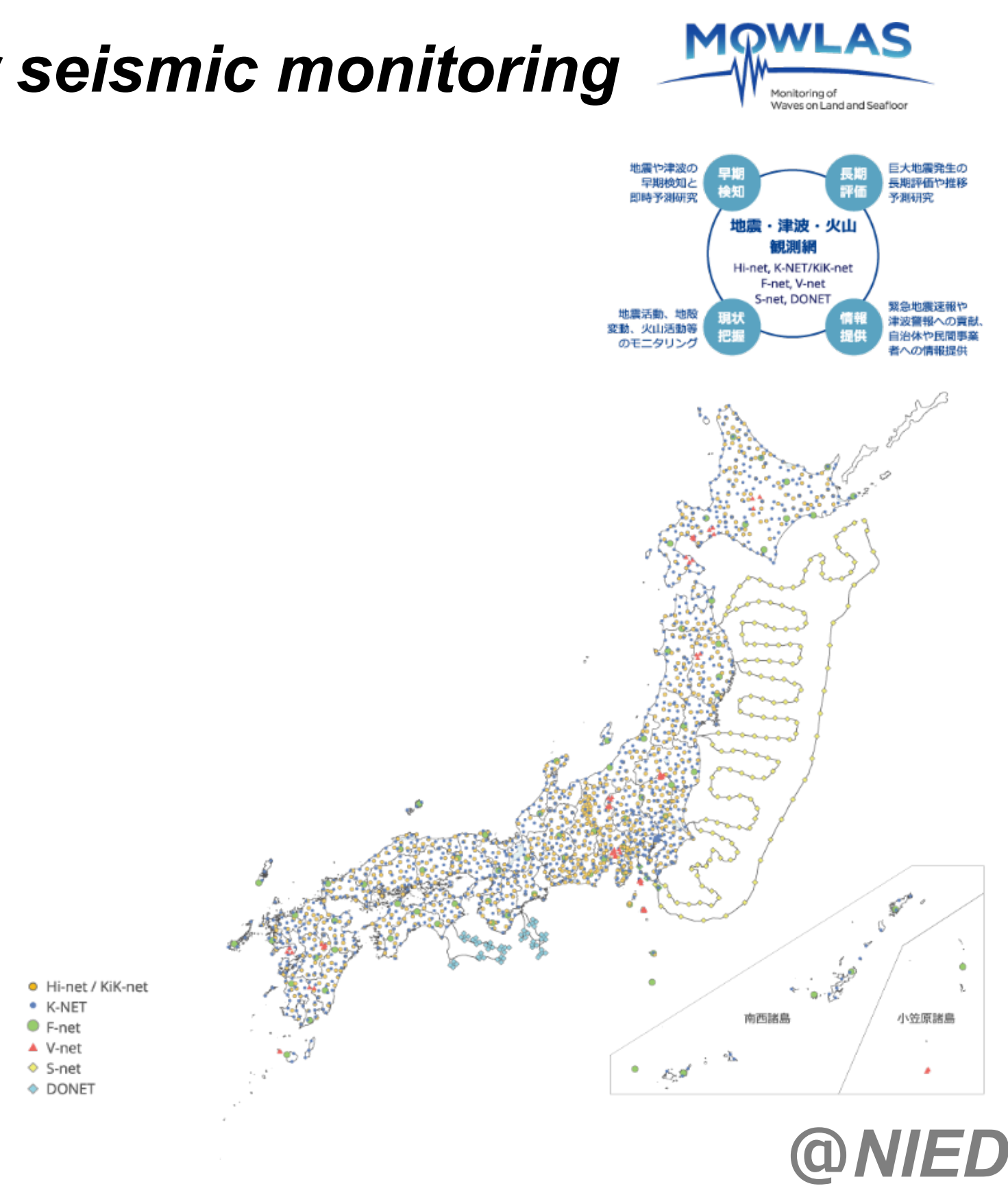
Marine basic observation network

[Interdisciplinary academic purpose]

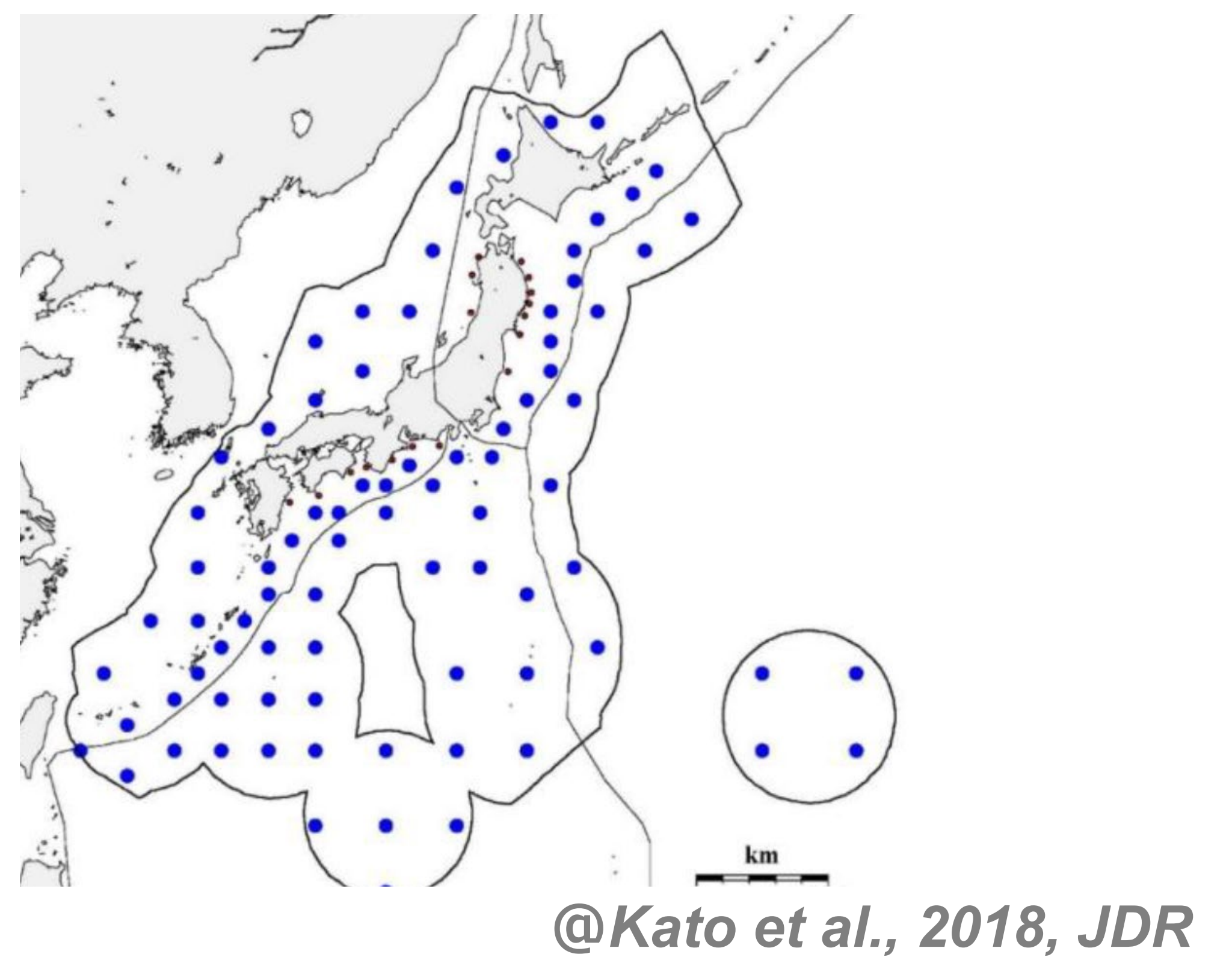
An earthquake base observation network is laid in the sea area, and if a geodetic base observation network is established in the near future, new sea area earthquake information engineering will be constructed.

On the other hand, huge basement observation networks have wide applicability to ocean observation other than earthquake information.

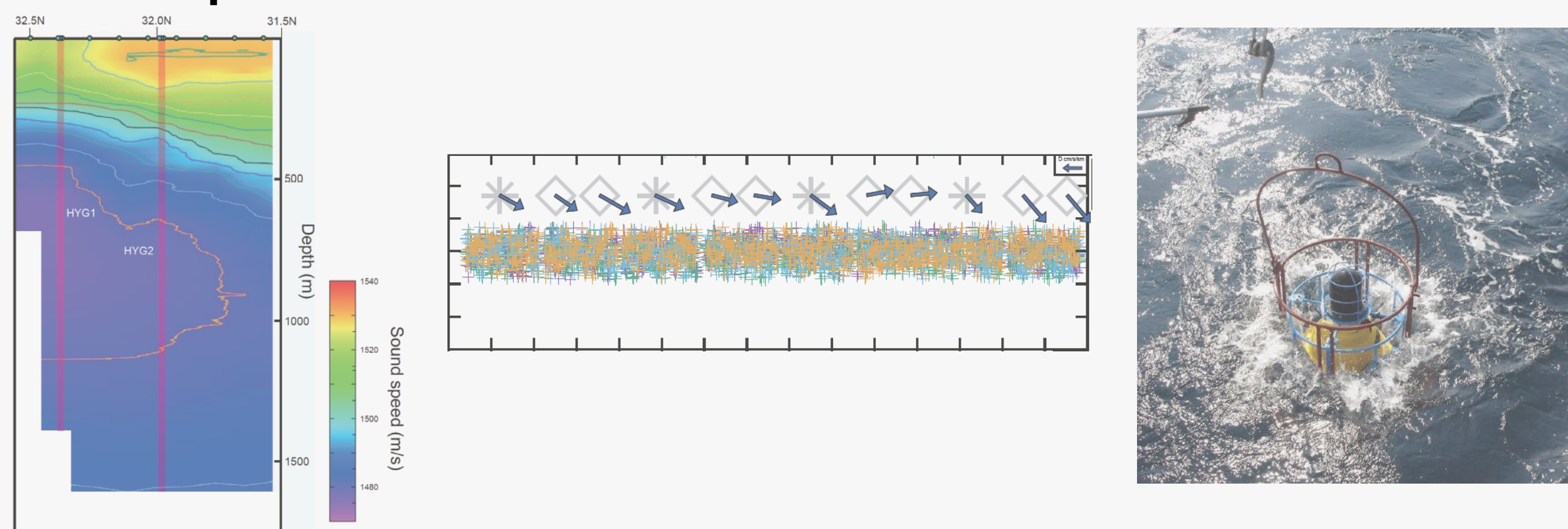
Seafloor seismic monitoring



Extracted seafloor geodetic monitoring



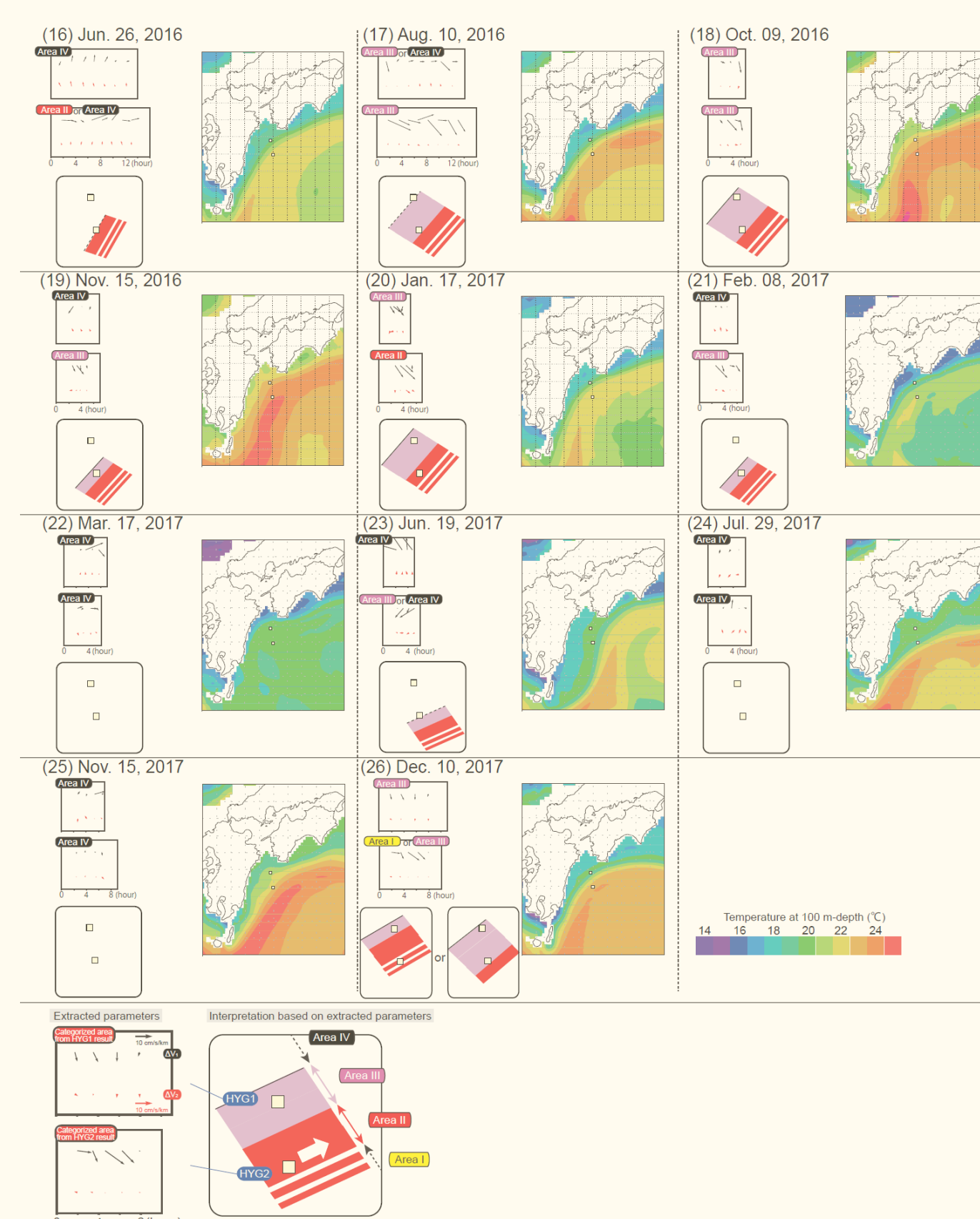
Relationship between acoustic communication and oceanic field



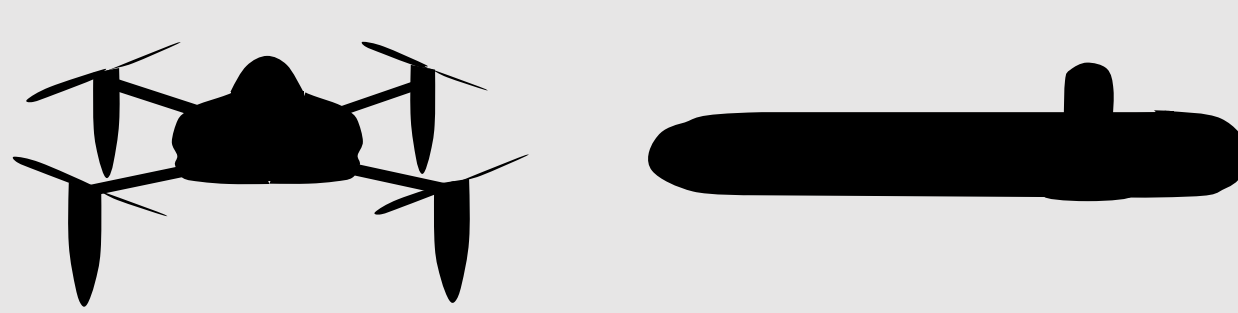
Application for fisheries science



Application for ocean modelling



Realtime monitoring technology



Direct/ Indirect monitor

The age of new fishery law